



CyberCogs CC-RKE100 Remote Keyless Entry and CC-FOB100 module

HARDWARE SPECIFICATIONS

- **Dimensions:** 90w x 58d x 12h (mm)
- **Power:** 6-36VDC
- **Communication Ports:** 1 CAN FD port
- **RF receive Frequencies:**
 - 433Mhz (425Mhz to 480Mhz)
 - 315Mhz (287Mhz to 320Mhz)
- **RF receive Modulation:** ASK, OOK, FSK
- **Data rate:** up to 200Kbps
- **Optional Frequency:** 125Khz TPMS transmitter
- **Processor:** Cortex M0 running at 48Mhz
- **Memory:**
 - 17 Kbytes RAM
 - 128Kbytes of FLASH
- **Package:** ABS black plastic UL 94V0
- **Connector :** 4 pin connector , TE CONNECTIVITY,
4POS,TAB0.5X0.4,HDR ASSY,90 DEG,COD A, P/N: 233920-4
- **Temperature range:** -40 to 95C

ADDITIONAL FEATURES

- ISO26262 , ASIL-B compliant
- USA designed and manufactured
- Integrated Security
- Secure boot
- Secure internal key storage for signing, verification, and encryption in secure module subcomponent

SOFTWARE FEATURES

- Adaptable Software with modular design for easy integration, performing all Remote Keyless Entry functions
- ISS FlexHSM pre-ported through partnership with ISS
- ISS FlexUpdate pre-ported through partnership with ISS
- ISS DLM Trust for provisioning through partnership with ISS
- Secure communication available through DLM Trust (available through partnership with ISS)
- Software developed to Autosar coding guidelines



CyberCogs CC-RKE100 Remote Keyless Entry and CC-FOB100 module (continued)

HARDWARE SPECIFICATIONS

- **Dimensions:** 35w x 64d x 16h (mm)
- **Power:** CR2032 Coin battery
- **Battery life:** 4+ years
- **RF receive Frequencies:**
 - 433Mhz (425Mhz to 480Mhz)
 - 315Mhz (287Mhz to 320Mhz)
- **RF receive Modulation:** ASK, OOK, FSK
- **Data rate:** up to 200Kbps
- **Processor:** Cortex M0 running at 48Mhz
- **Memory:**
 - 12 Kbytes RAM
 - 16Kbytes of FLASH
- **Package:** ABS plastic UL 94V0
- **Buttons :** 3 buttons (option for more)
 - Lock
 - Unlock
 - Aux (Alarm, customizable)
- **Temperature range:** -40 to 60C

ADDITIONAL FEATURES

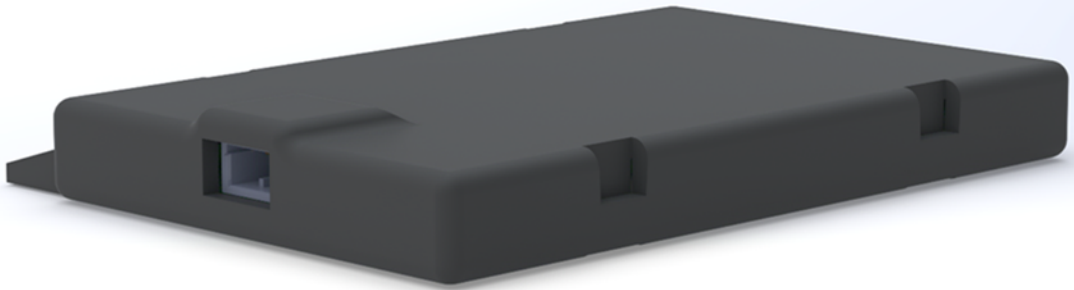
- USA designed and manufactured
- Integrated Security
- Secure boot
- Secure internal key storage for signing, verification, and encryption in secure module subcomponent

SOFTWARE FEATURES

- Adaptable Software with modular design for easy integration, performing all Remote Keyless Entry functions
- ISS FlexHSM pre-ported through partnership with ISS
- ISS FlexUpdate pre-ported through partnership with ISS
- ISS DLM Trust for provisioning through partnership with ISS
- Secure communication available through DLM Trust (available through partnership with ISS)
- Software developed to Autosar coding guidelines



CyberCogs CC-RKE100 Depiction





CyberCogs CC-FOB100 Depiction

